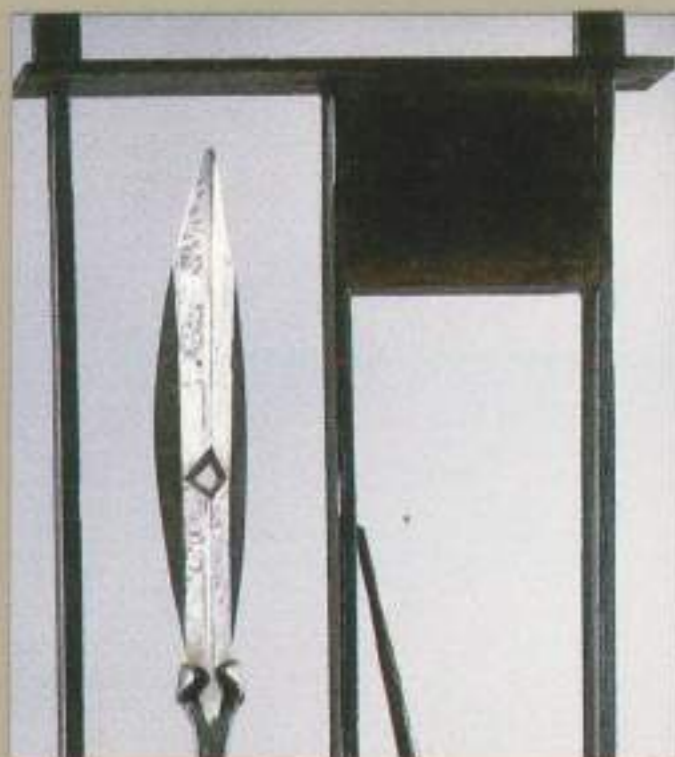


*NEIL GOODMAN*

*STRUVE*  
GALLERY







cover: *Still Life #2*, 1988  
bronze  
16" x 76" x 5½" deep

this page: detail of *Triptych*

opposite: *Triptych*, 1988  
bronze  
64" x 72" x 5½" deep



# NEIL GOODMAN

## BORN

1953 Hammond, Indiana

## EDUCATION

Kansas City Art Institute, BFA

Tyler School of Art, Philadelphia, MFA

## SELECTED EXHIBITIONS (SOLO)

1988 Struve Gallery, Chicago

1986 Struve Gallery, Chicago

Reicher Gallery, Lake Forest, Illinois

1982 Frumkin & Struve Gallery, Chicago

1981 Union Gallery, Purdue University, Lafayette, Indiana

Indiana University, Gary, Indiana

1980 *Landscape Still Life*, Chicago Cultural Center, Chicago

## SELECTED EXHIBITIONS (GROUP)

1988 Chicago International Art Exposition, Navy Pier, Chicago

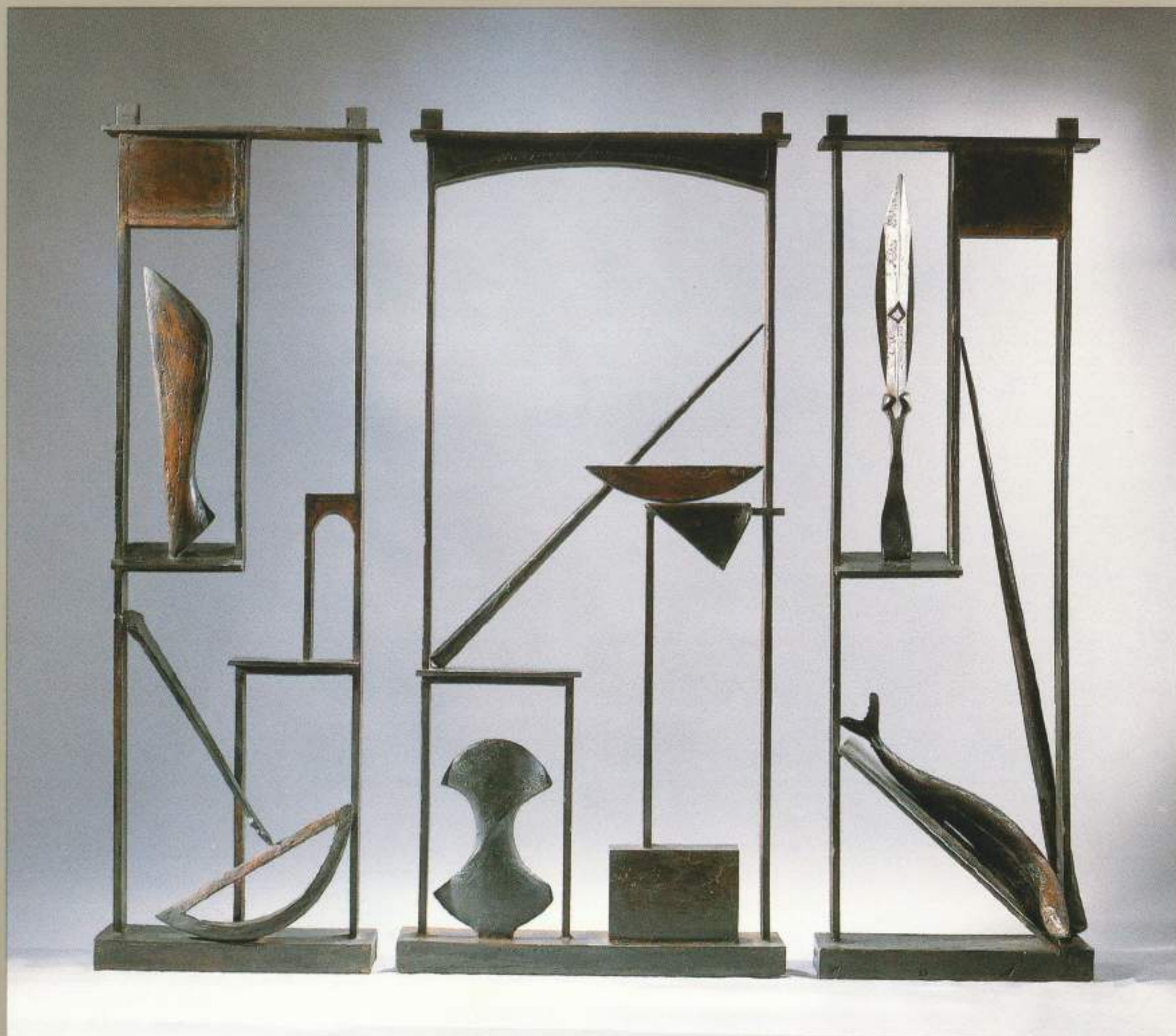
1987 *National Sculpture*, Foster White Gallery, Seattle

Chicago International New Art Forms Exposition,

Navy Pier, Chicago

1986 Chicago International New Art Forms Exposition, Navy Pier,  
Chicago

*Sculpture*, Dart Gallery, Chicago







this page: detail of *Relief*  
opposite: *Relief*, 1988  
bronze  
59" x 51" x 5½" deep





- 1985 Chicago International Art Exposition, Navy Pier, Chicago  
*Heads*, Randolph Street Gallery, Chicago  
*Contemporary Still Life*, Struve Gallery, Chicago
- 1984 *Mile of Sculpture*, Chicago International Art Exposition,  
Chicago  
*Pilsen Artists*, Swen Parson Gallery, Northern Illinois  
University, DeKalb, Illinois
- 1983 *Bronze Sculpture*, Frumkin & Struve Gallery, Chicago
- 1982 *Illinois Invitational*, Illinois State Museum, Springfield  
*Neo-Objective Sculpture*, Dart Gallery, Chicago

*SELECTED COLLECTIONS*

A.G. Becker, Chicago  
AT&T, Chicago  
Richard Johnson  
Diane Legge Lohan  
Claire Prussian





this page: detail of *Still Life #1*  
opposite: *Still Life #1*, 1988  
bronze  
19" x 80" x 5½" deep







Struve Gallery  
309 West Superior Street  
Chicago, Illinois 60610  
Tel. 312.787.0563  
Fax. 312.787.7268